



Ingenio Clinical
Reingeniería Médica

RESONANCIA MAGNÉTICA MR450W_QA

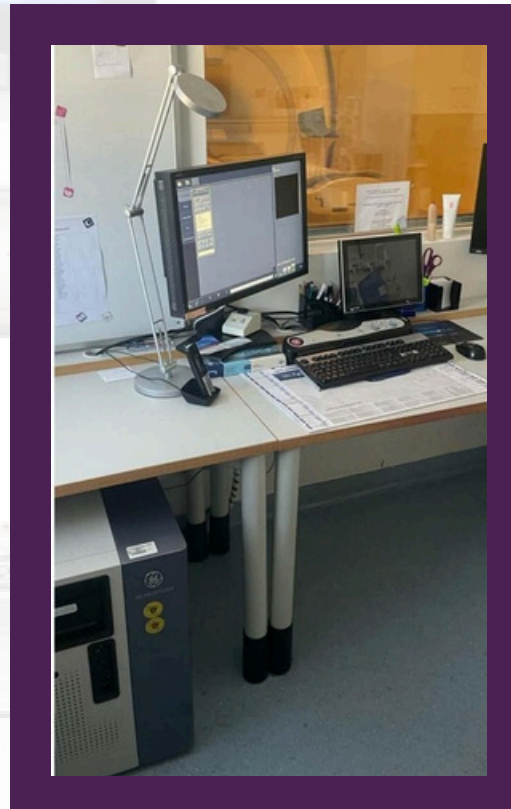
IMÁN MR450W DE 1,5 T
AÑO DE FABRICACIÓN: 2013.
NÚMERO DE SERIE DEL IMÁN: HM0700. VERSIÓN
DEL SOFTWARE DE LA APLICACIÓN: DV25.1_R05.
SISTEMA OPERATIVO: HELIOS 6.6.2.
NÚMERO DE CANALES DE RECEPCIÓN: 32. NIVEL DE
HE: 87,40 % A 1,002 PSI.





CONSOLA

- Estación de trabajo host DV MCF Z400 MR
- Nivel de aplicación DV25.1_R05_2131.a OS
- Helios_6.6.2 VRE OS Helios_6.6.1



SISTEMA ELECTRÓNICO



HEC



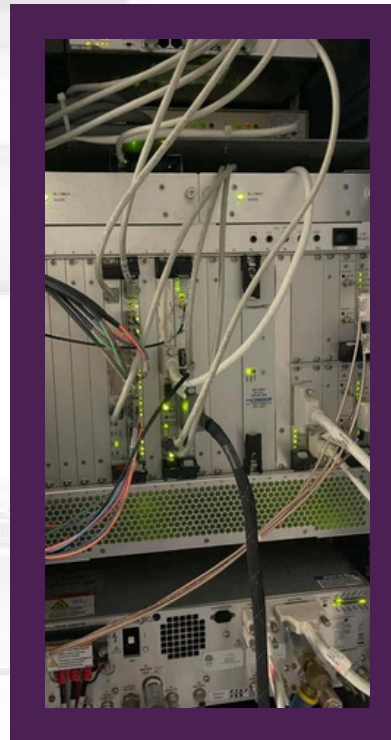
Gabinete MR450w PGR
5396502-6
2013 - 04



GABINETE DE PENETRACIÓN
5168000-7
2013-08

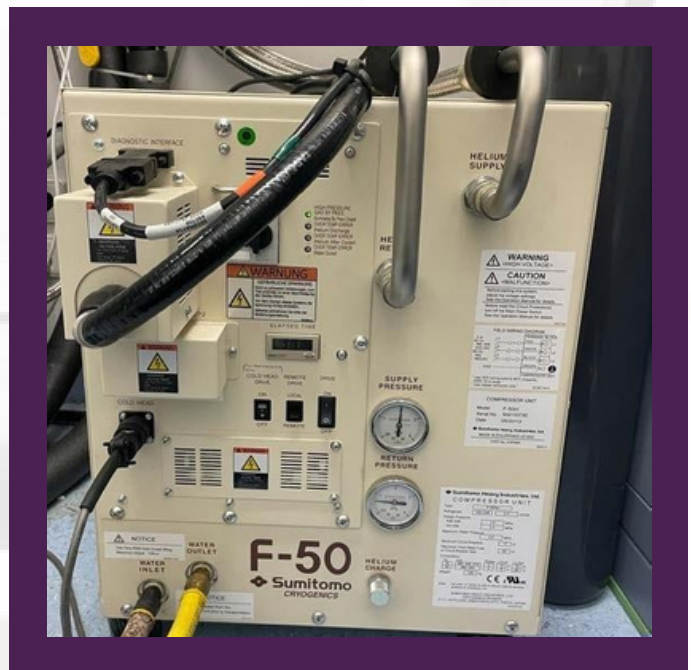


- ADQUISICIÓN DE IMAGEN
- RECONSTRUCCIÓN
- RF ELECTRONICS



SUBSISTEMA CRIOGÉNICO

- Modelo de compresor: F-50H
- N.º de serie: SA213373D
- Fecha de fabricación: 05/2013
- Horas totales: 91918
- Último reemplazo del adsorbente: El compresor tiene un sello verde de GE con la inscripción "61274 Ads. Rep."
- Nivel de helio: 87,40 %
- Presión del imán: 1,00 psi
- RuO₂ del cabezal frío: 4,19 kJ
- RuO₂ reacondicionado: 4,23 kJ
- Blindaje: 44,55 kJ
- Modelo de cabezal frío: RDK-408A3
- N.º de serie: 35A16356C
- Fecha de fabricación: 01/2016
- Fecha del último reemplazo del cabezal frío: DESCONOCIDO (SI ES NECESARIO CAMBIO, SE COTIZA POR SEPARADO)





OPCIONES DE IMAGEN INSTALADAS

ARC	FAST GRADIENT ECHO	IDEAL	PERFORMED PROCEDURE STEP	DIFFUSION TENSOR
ASSET	FIESTA 2D	IDRIVE	PROPELLER	THREE PLANE LOCALIZER
BLOOD FLOW AND VOLUME MEASUREMENT	2D FAT SAT FIESTA	IDRIVE PRO	DW PROPELLER	FIBERTRAK
BLOODSUPP	FIESTA 3D	INHANCE DELTAFLOW	T1 FLAIR PROPELLER	TRICKS
BRAVO	3D FAT SAT FIESTA	INHANCE 2D INFLOW	T2 PROPELLER	VIBRANT -DE
BRAINSTAT AIF	FIESTA -C	INHANCE 3D VELOCITY	T2 FLAIR PROPELLER	IP PROTECTION
CINE	FLAIR3D	INHANCE 3D INFLOW IR	QUICKSTEP	PHASE IMAGING TECHNIQUE
COSMIC	FLAIR EPI	LAVA	READY BRAIN	BODY NAVIGATOR
CUBE T2	3DFRFSE	LAVA -DE	IDRIVE PRO PLUS	SILENT PROPELLER
3D DUAL ECHO	FAST SPIN ECHO AND FLAIR	LAVA -XV	SMART PREP	DW PREP
DW EPI	FSE_XL	2D MERGE	SPECIAL	CHEMICAL SHIFT
E3DTOF	FLUORO-TRIGGERED MRA	3DMERGE	SSFSE	MDE PLUS
ECHO PLANAR IMAGING	TIME OF FLIGHT	MULTI – PHASE (VARIABLE DELAYS)	SSFSE MRCP	CUBE DIR
FASTCINE	MODALITY WORKLIST	PHASE CONTRAST VASCULAR IMAGING	T2STAR WEIGHTED ANGIOGRAPHY	

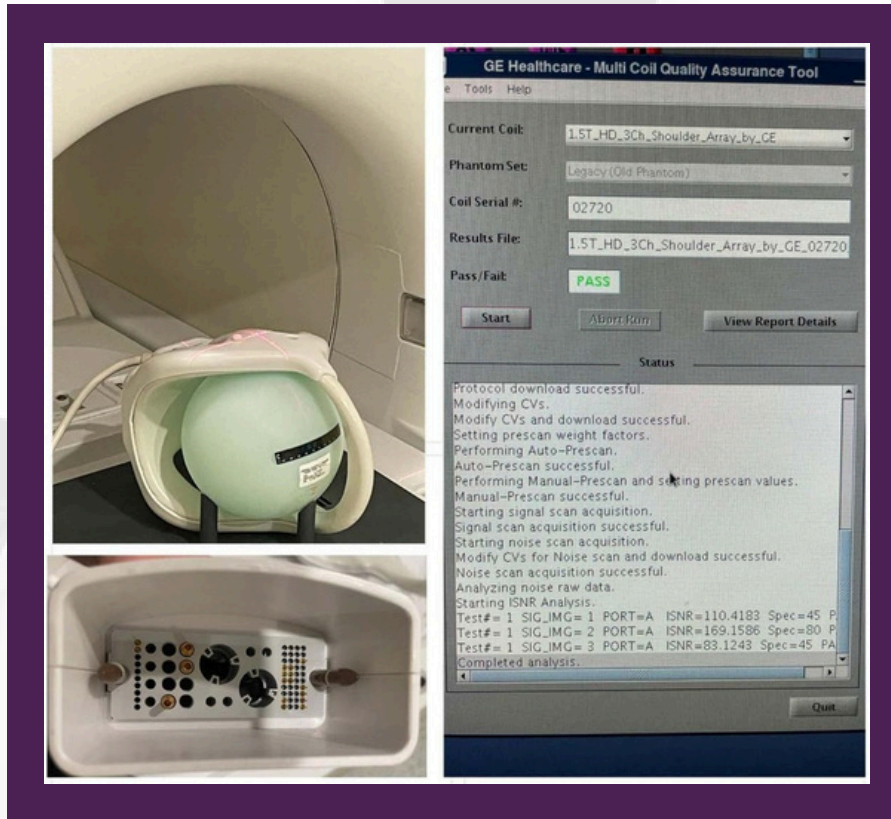


BOBINAS DEL SITIO

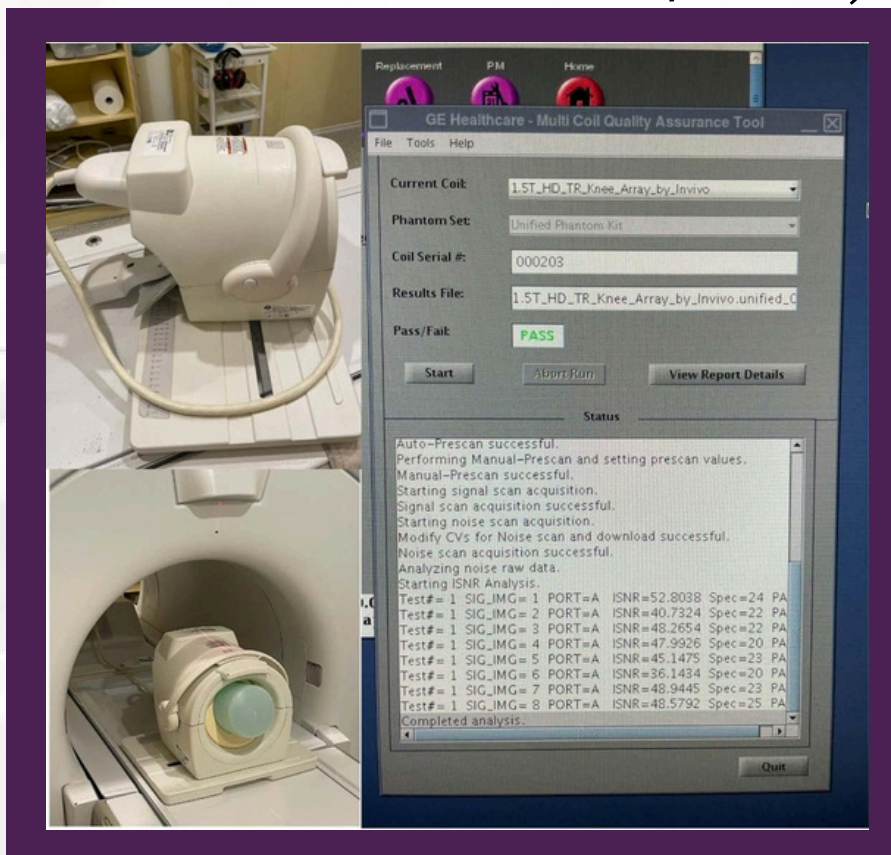
DESCRIPCIÓN DE BOBINA	NÚMERO DE PARTE	NÚMERO DE SERIE	RESULTADO DE LA PRUEBA	AÑO
1.5T HD SHOULDER ARRAY	5344905	02720	PASS	2020-10-07
1.5T HD T/R KNEE COIL	5406150-2	000203	PASS	2013-04-23
1.5T GEM ANTERIOR ARRAY	5391442	02697	PASS	2018-11-02
HD 8CH WRIST ARRAY	5406395-2	000124	PASS	2013-07-10
GEM HNU BASE	5372735	04617	PASS	2021-07-23
GEM HNU ANTERIOR	5372735	04617	PASS	2021-07-23
GEM HNU ADAPTOR BLOCK	5372735	04617	PASS	2021-07-23
1.5T SPLIT HEAD COIL	5182594	000914WHS	PASS	2018-12-29
1.5T GEM PVA	5372731	434	PASS	2013-04
TABLE 1 PA1 INTEGRATED		268M63	FAIL	
TABLE 1 PA2 INTEGRATED		268M63	FAIL	



ARREGLO DE HOMBRO HD DE 1,5 T

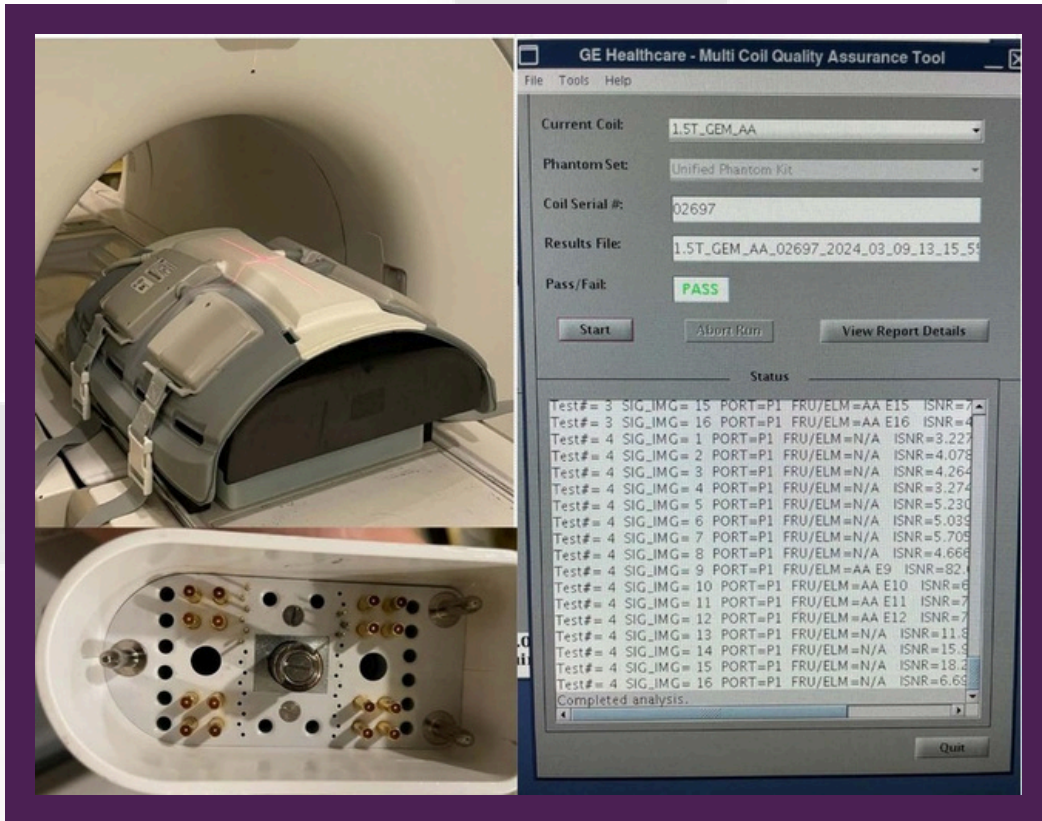


MUELLE DE RODILLA HD T/R DE 1,5 T

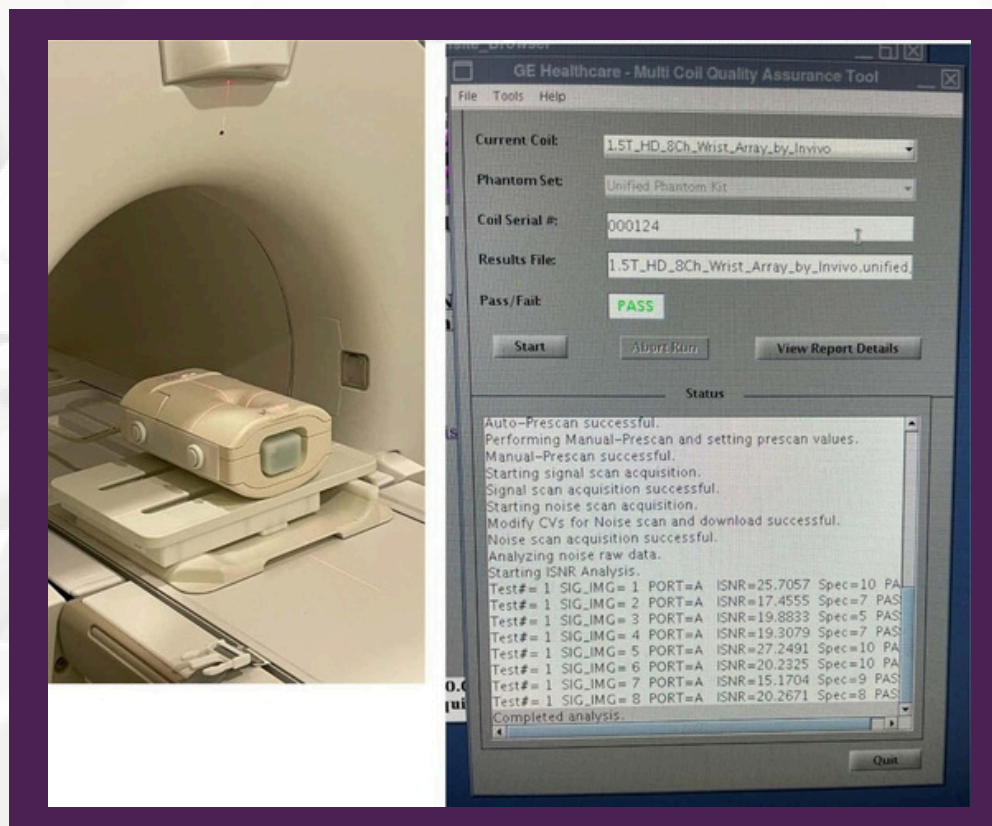




ARREGLO ANTERIOR GEM DE 1,5 T

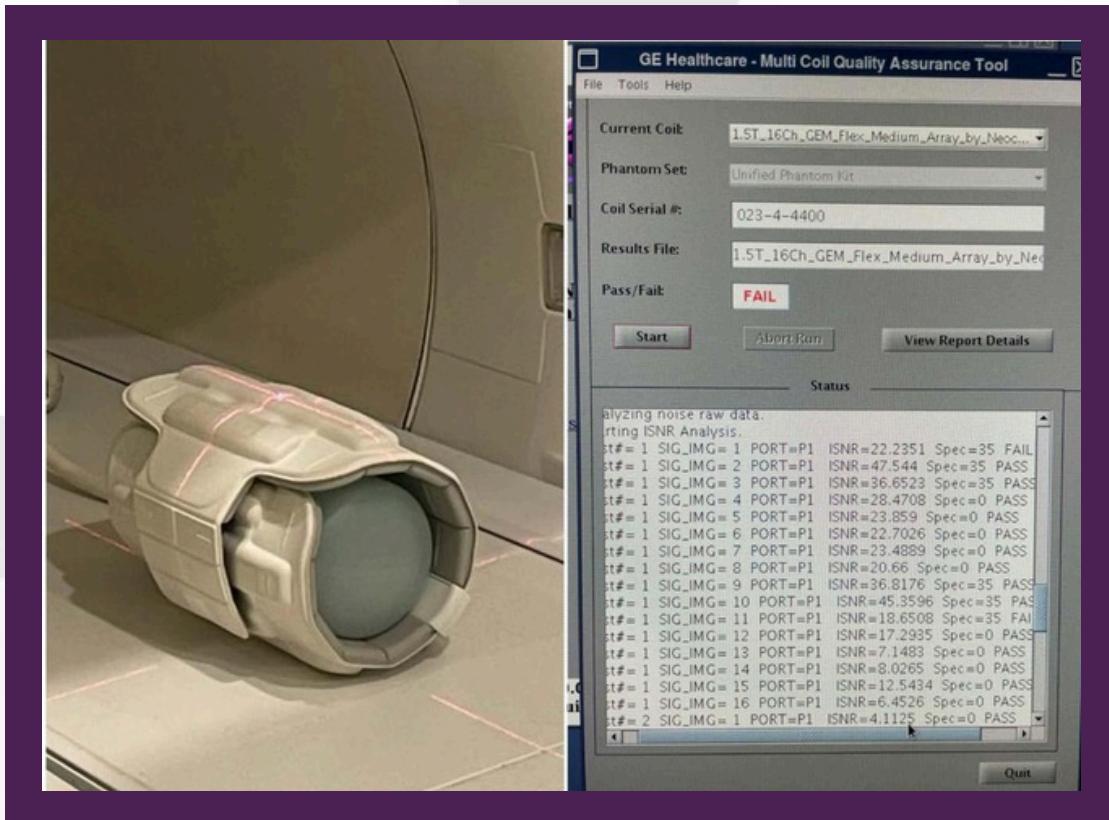


ARREGLO DE MUÑECA HD DE 8 CANALES

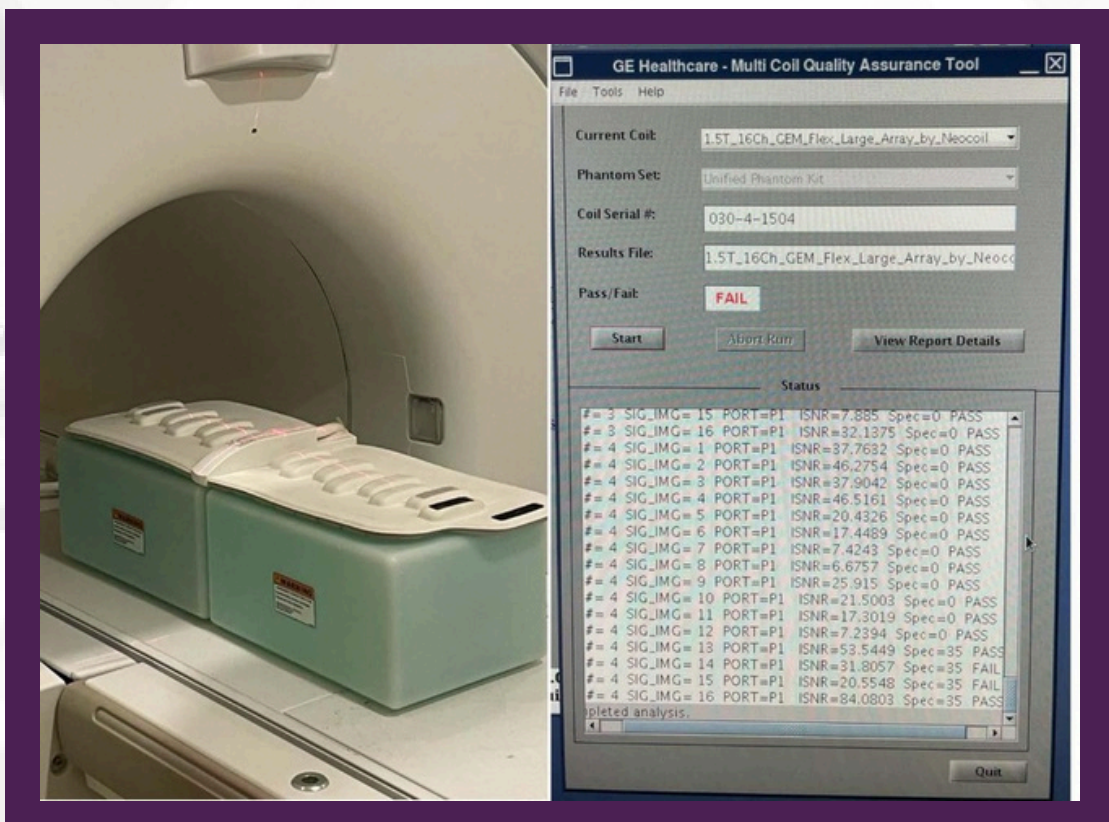




BOBINA FLEXIBLE GEM 16 MEDIA



BOBINA FLEXIBLE GEM 16 GRANDE





BOBINA HNU



GE Healthcare - Multi Coil Quality Assurance Tool

File Tools Help

Current Coil: 1.5T_GEM_HNU_Face_Bill

Phantom Set: Unified Phantom Kit

Coil Serial #: 04617

Results File: 1.5T_GEM_HNU_Face_Bill_04617_2024_03_0

Pass/Fail: **PASS**

Start Abort Run View Report Details

Status

Test#	SIG_IMG	PORT	FRU/ELM	ISNR
2	8	P2	HNU E6	41.2
2	9	P2	N/A	3.842
2	10	P2	N/A	3.74
2	11	P2	N/A	2.38
2	12	P2	N/A	20.8
3	1	P2	N/A	16.37
3	2	P2	N/A	19.67
3	3	P2	HNU E15	1
3	4	P2	HNU E14	1
3	5	P2	HNU E13	1
3	6	P2	HNU E16	1
3	7	P2	HNU E17	1
3	8	P2	HNU E18	1
3	9	P2	HNU E19	1
3	10	P2	N/A	20.8
3	11	P2	N/A	22.8
3	12	P2	N/A	22.9
3	13	P2	N/A	17.7

Completed analysis.

GE Healthcare - Multi Coil Quality Assurance Tool

File Tools Help

Current Coil: 1.5T_GEM_HNU_AB_Bridge

Phantom Set: Unified Phantom Kit

Coil Serial #: 04617

Results File: 1.5T_GEM_HNU_AB_Bridge_04617_2024_03_0

Pass/Fail: **PASS**

Start Abort Run View Report Details

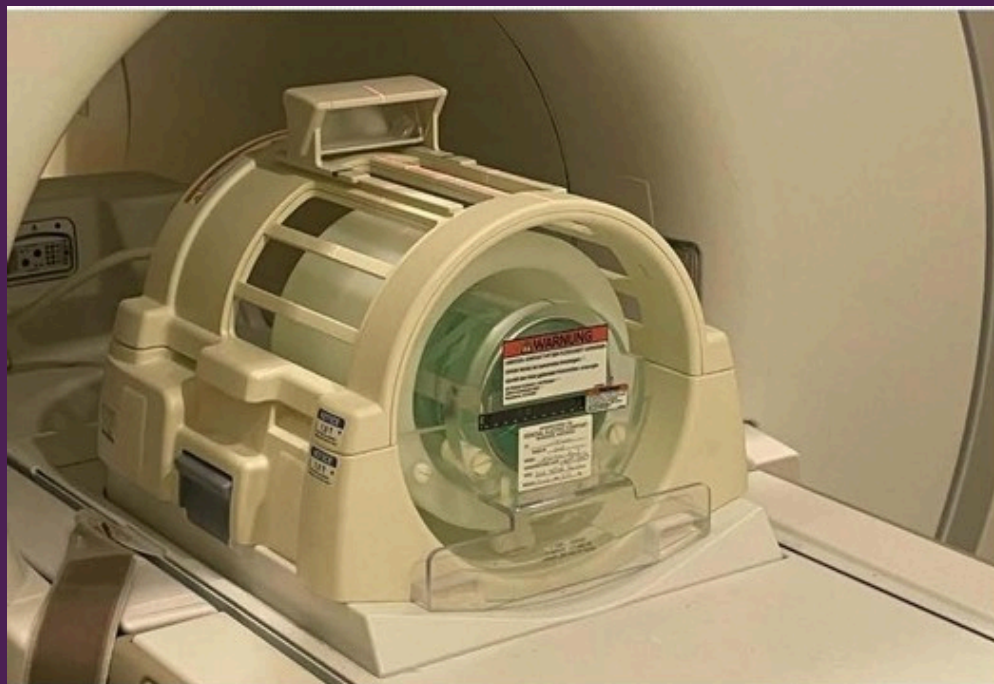
Status

Performing Manual-PreScan and setting prescan values.
Manual-PreScan successful.
Starting signal scan acquisition.
Signal scan acquisition successful.
Starting noise scan acquisition.
Modify CVs for Noise scan and download successful.
Noise scan acquisition successful.
Analyzing noise raw data.
Starting ISNR Analysis.
Test# = 1 SIG_IMG = 1 PORT = P2 FRU/ELM = HNU Bridge E15 ISNR = 121.6
Test# = 1 SIG_IMG = 2 PORT = P2 FRU/ELM = HNU Bridge E14 ISNR = 139.3
Test# = 1 SIG_IMG = 3 PORT = P2 FRU/ELM = N/A ISNR = 96.63
Test# = 1 SIG_IMG = 4 PORT = P2 FRU/ELM = N/A ISNR = 74.70
Test# = 1 SIG_IMG = 5 PORT = P2 FRU/ELM = N/A ISNR = 139.3
Test# = 1 SIG_IMG = 6 PORT = P2 FRU/ELM = N/A ISNR = 96.63
Test# = 1 SIG_IMG = 7 PORT = P2 FRU/ELM = N/A ISNR = 15.30
Test# = 1 SIG_IMG = 8 PORT = P2 FRU/ELM = N/A ISNR = 18.18
Test# = 1 SIG_IMG = 9 PORT = P2 FRU/ELM = N/A ISNR = 22.48
Completed analysis.

Quit



CABEZAL DIVIDIDO DE 1,5 T



DQA

DQA Tool

Progress		Actions Required (Refer to service document for corrective actions)
1. Scanning axials	Completed	
2. Checking setup integrity	Completed	
3. Checking coarse Isocenter	Completed	
4. Checking X&Y coil drive	Completed	
5. Checking X&Y polarity and phantom position in axial	Completed	
6. Scanning coronal	Completed	
7. Checking Z Polarity	Completed	
8. Checking phantom position in coronal	Completed	
9. Update config	Completed	

Status
X || 100.17 || (99.50 <--> 100.50)
Y || 99.88 || (99.50 <--> 100.50)
Z || 100.09 || (99.50 <--> 100.50)
Images are stored in /export/home/signa/tools/DQA_tool directory
Axial Images: E51449511-15.MR
Coronal Image: E51450511.MR
You have not updated the Config files...
Creating the file: /usr/g/caldir/DQAlsoZcal.dat
Creating the file: /usr/g/caldir/DQAGradCal.dat
DQA Tool completed successfully.

Start Restart Abort Exit

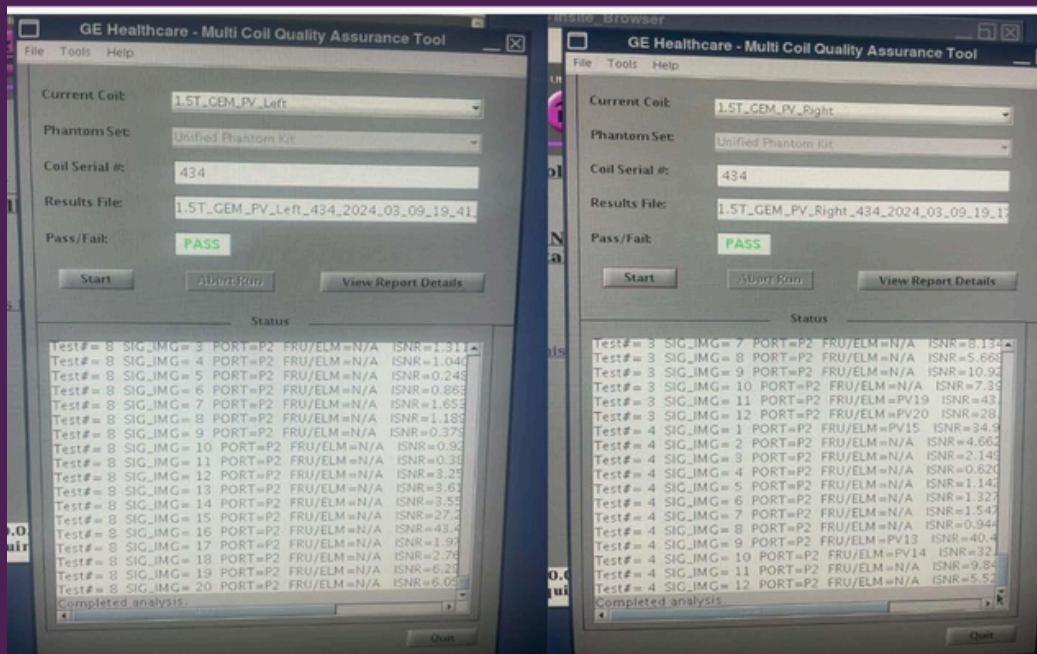




1.5 T GEM PVA

GEM PV IZQUIERDA

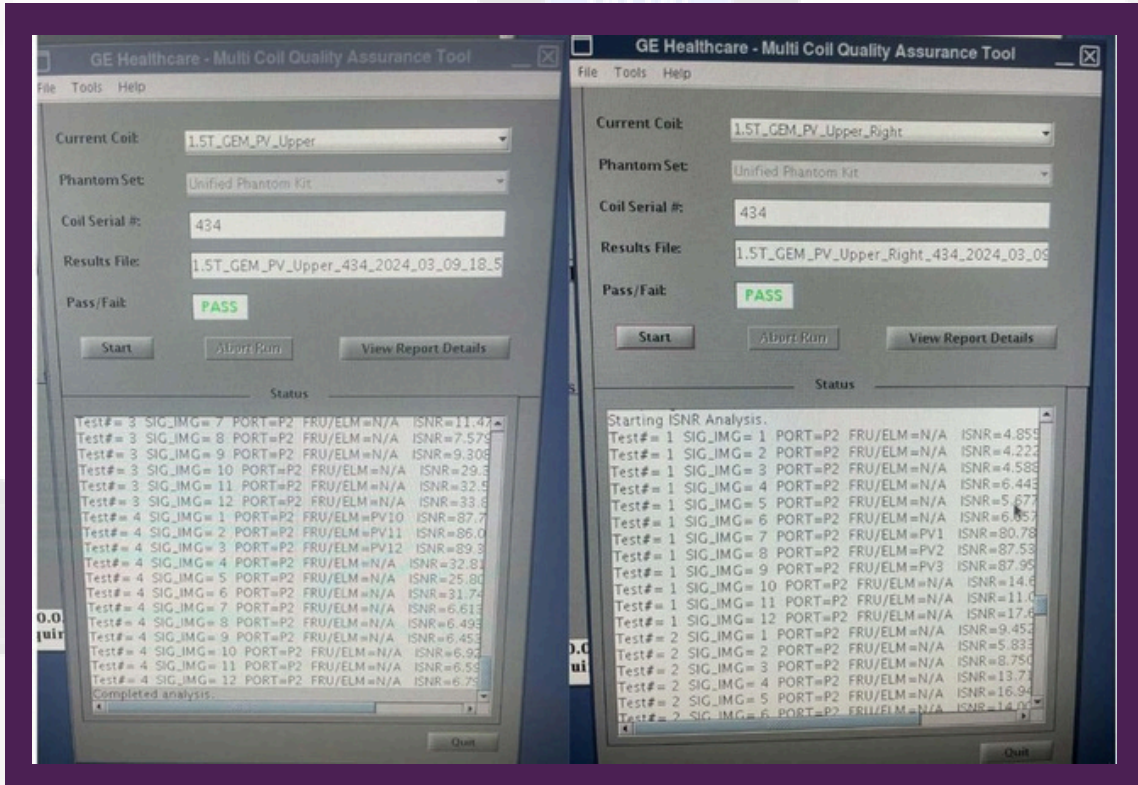
GEM PV DERECHA



GEM PV SUPERIOR

GEM PV SUPERIOR DERECHA





MESA 1 PA1 / PA2

